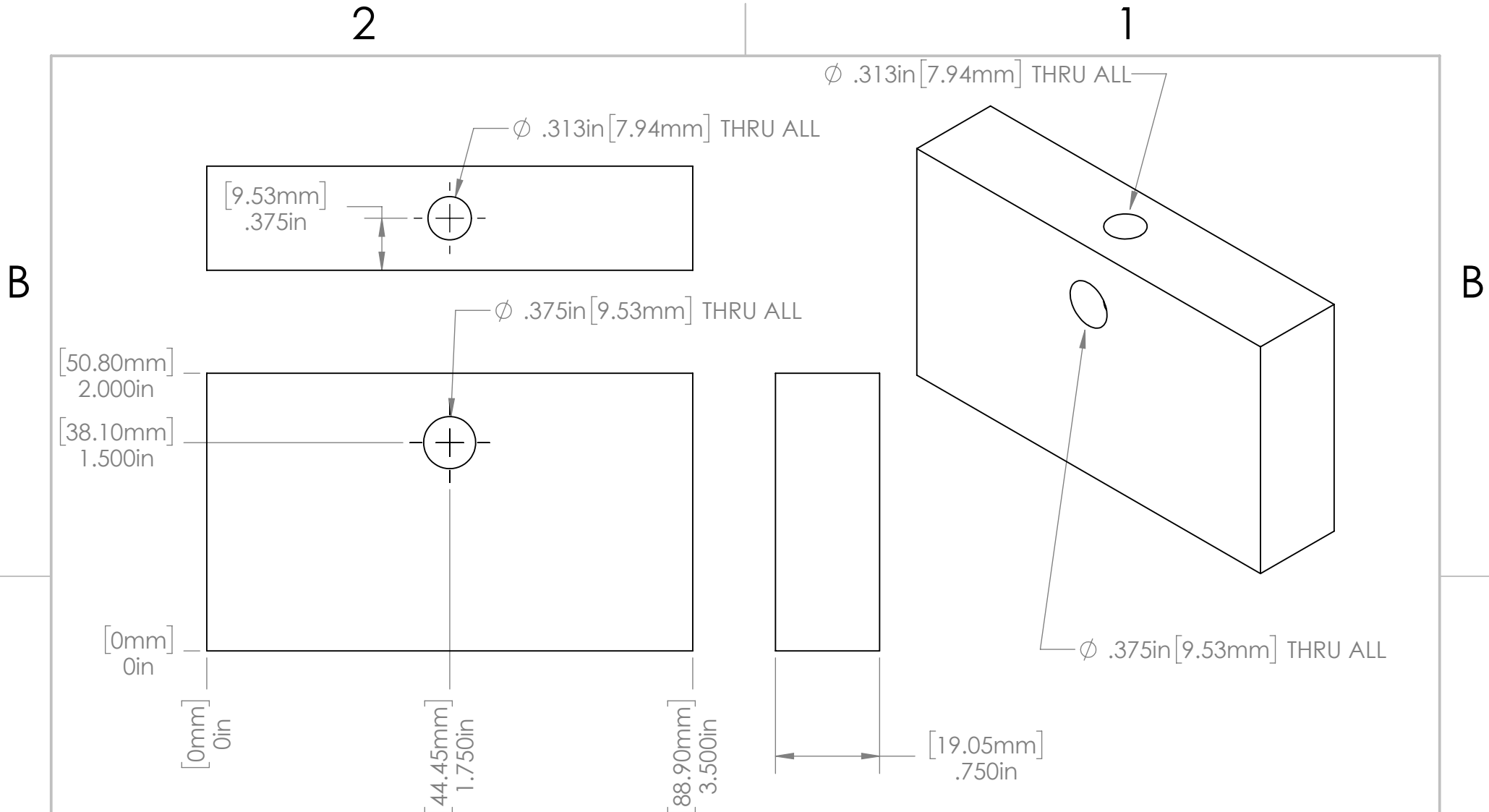
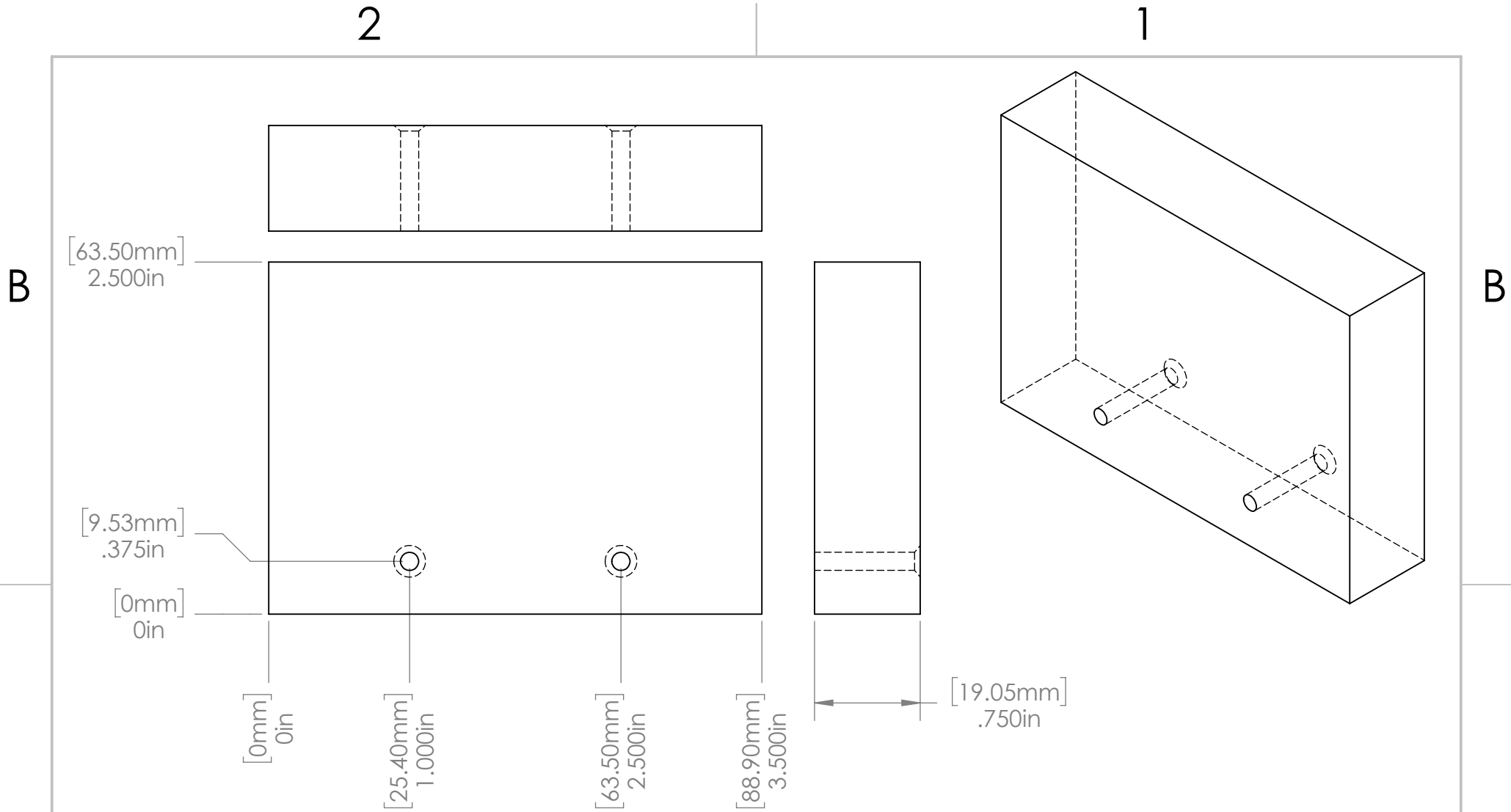


<p><b>OPEN SOURCE HARDWARE LICENSE LGPL</b></p>			UNLESS OTHERWISE SPECIFIED:		NAME	DATE	<p><b>TITLE:</b> Hinge Plate 2 Required 3/4" x 3-1/2" Pine</p>		
			DIMENSIONS ARE IN INCHES	DRAWN					
			TOLERANCES:	CHECKED					
			FRACTIONAL ±	ENG APPR.					
			ANGULAR: MACH ± BEND ±	MFG APPR.					
		TWO PLACE DECIMAL ±	Q.A.						
		THREE PLACE DECIMAL ±	COMMENTS:						
		INTERPRET GEOMETRIC TOLERANCING PER:	MATERIAL				SIZE	DWG. NO.	REV
			Material <not specified>				reprap_1		
	NEXT ASSY	USED ON	FINISH				A		
	APPLICATION		DO NOT SCALE DRAWING				SCALE: 1:1	WEIGHT: 1.840	SHEET 1 OF 10



UNLESS OTHERWISE SPECIFIED:		NAME	DATE	TITLE: Indicator Holder Block 1 Required 3/4" x 3-1/2" Pine
		DRAWN		
DIMENSIONS ARE IN INCHES TOLERANCES: FRACTIONAL $\pm$ ANGULAR: MACH $\pm$ BEND $\pm$ TWO PLACE DECIMAL $\pm$ THREE PLACE DECIMAL $\pm$		CHECKED		SIZE DWG. NO. REV
		ENG APPR.		
INTERPRET GEOMETRIC TOLERANCING PER:		MFG APPR.		reprap_1 A belt_stretch_test_sto
		Q.A.		
MATERIAL Material <not specified>		COMMENTS:		SCALE: 1:1 WEIGHT: 1.426 SHEET 2 OF 10
OPEN SOURCE HARDWARE LICENSE LGPL	NEXT ASSY	USED ON	FINISH	
	APPLICATION		DO NOT SCALE DRAWING	



A

A

OPEN SOURCE HARDWARE LICENSE LGPL			UNLESS OTHERWISE SPECIFIED:		NAME	DATE	TITLE: Frame Top Block 1 Required 3/4" x 3-1/2" Pine		
			DIMENSIONS ARE IN INCHES	DRAWN					
			TOLERANCES:	CHECKED					
			FRACTIONAL ±	ENG APPR.					
			ANGULAR: MACH ± BEND ±	MFG APPR.					
		TWO PLACE DECIMAL ±	Q.A.						
		THREE PLACE DECIMAL ±	COMMENTS:						
		INTERPRET GEOMETRIC TOLERANCING PER:					SIZE	DWG. NO.	REV
		MATERIAL	Material <not specified>						
	NEXT ASSY	USED ON	FINISH						
	APPLICATION		DO NOT SCALE DRAWING						

reprap\_1 A Belt\_stretch\_test\_sto

SCALE: 1:1 WEIGHT: 1.851 SHEET 3 OF 10

2

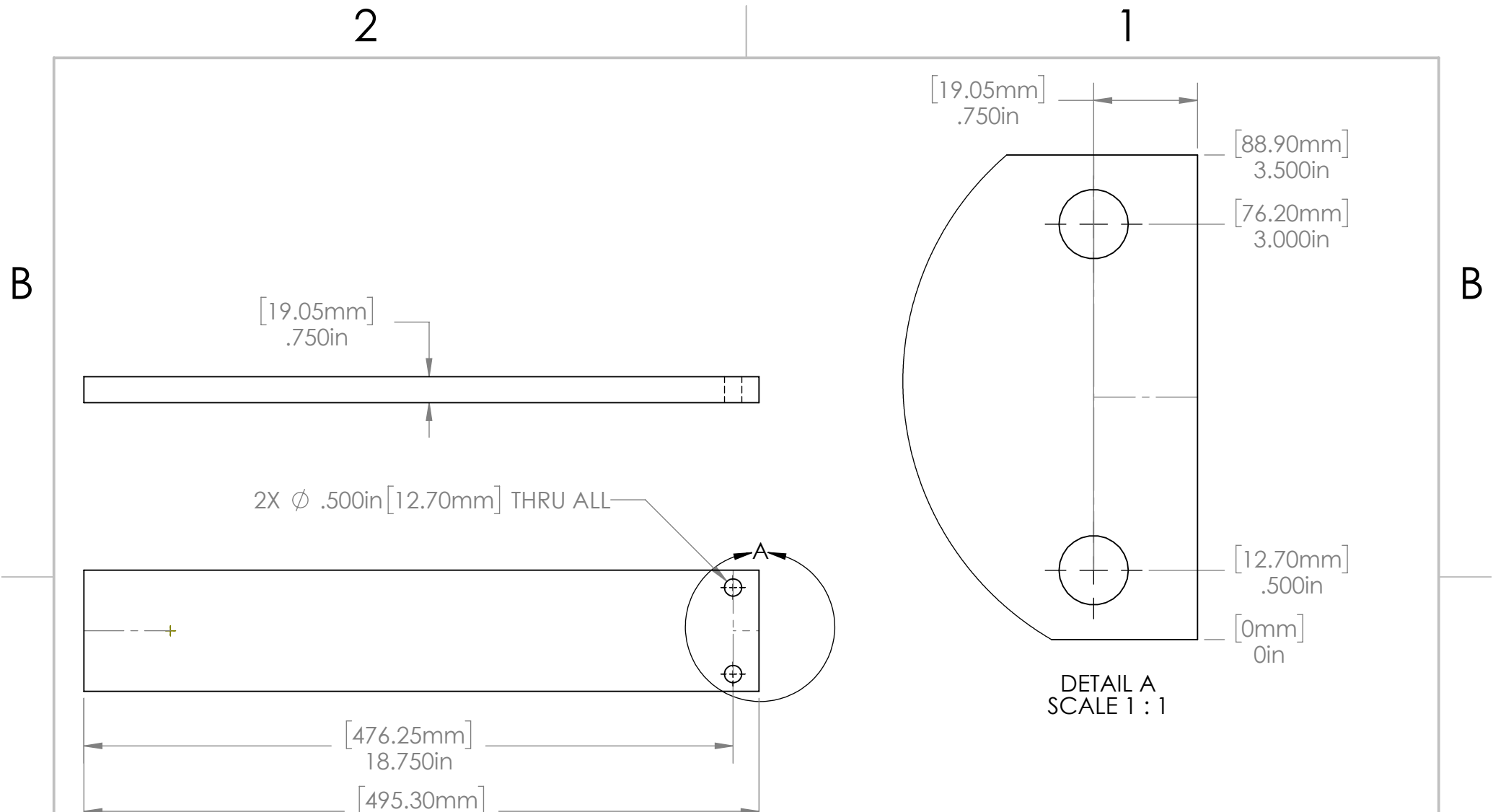
1

2

1

B

B



<p>OPEN SOURCE HARDWARE LICENSE LGPL</p>			UNLESS OTHERWISE SPECIFIED:		NAME	DATE	<p>TITLE: Bottom Tongue Board 1 Required 3/4" x 3-1/2" Pine</p>		
			DIMENSIONS ARE IN INCHES	DRAWN					
			TOLERANCES:	CHECKED					
			FRACTIONAL ±	ENG APPR.					
			ANGULAR: MACH ± BEND ±	MFG APPR.					
		TWO PLACE DECIMAL ±	Q.A.			SIZE	DWG. NO.	REV	
		THREE PLACE DECIMAL ±	INTERPRET GEOMETRIC TOLERANCING PER:	COMMENTS:					
			MATERIAL	reprap_					
			Material <not specified>						
			FINISH						
	NEXT ASSY	USED ON	DO NOT SCALE DRAWING				SCALE: 1:8	WEIGHT: 13.971	SHEET 4 OF 10

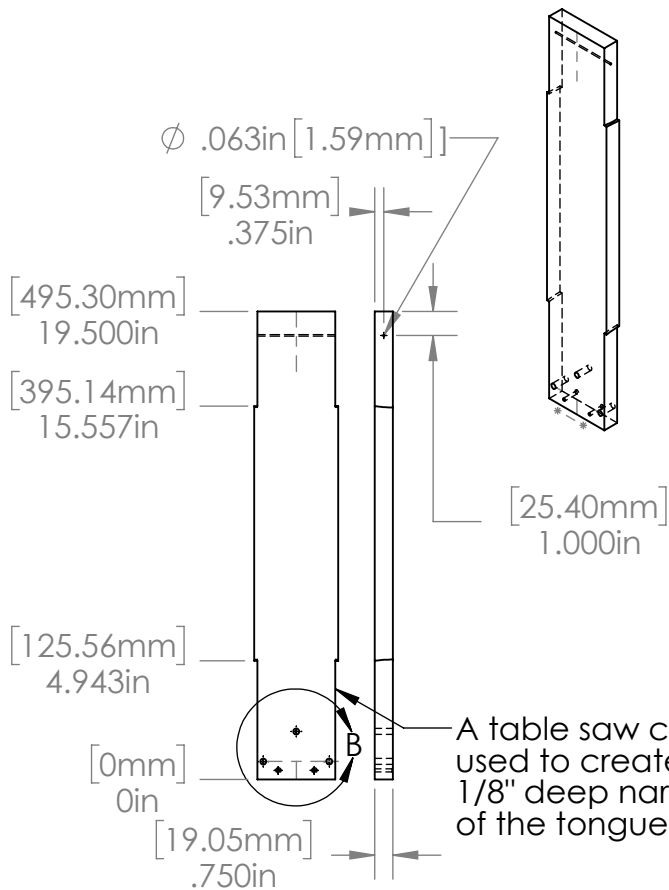
2

1

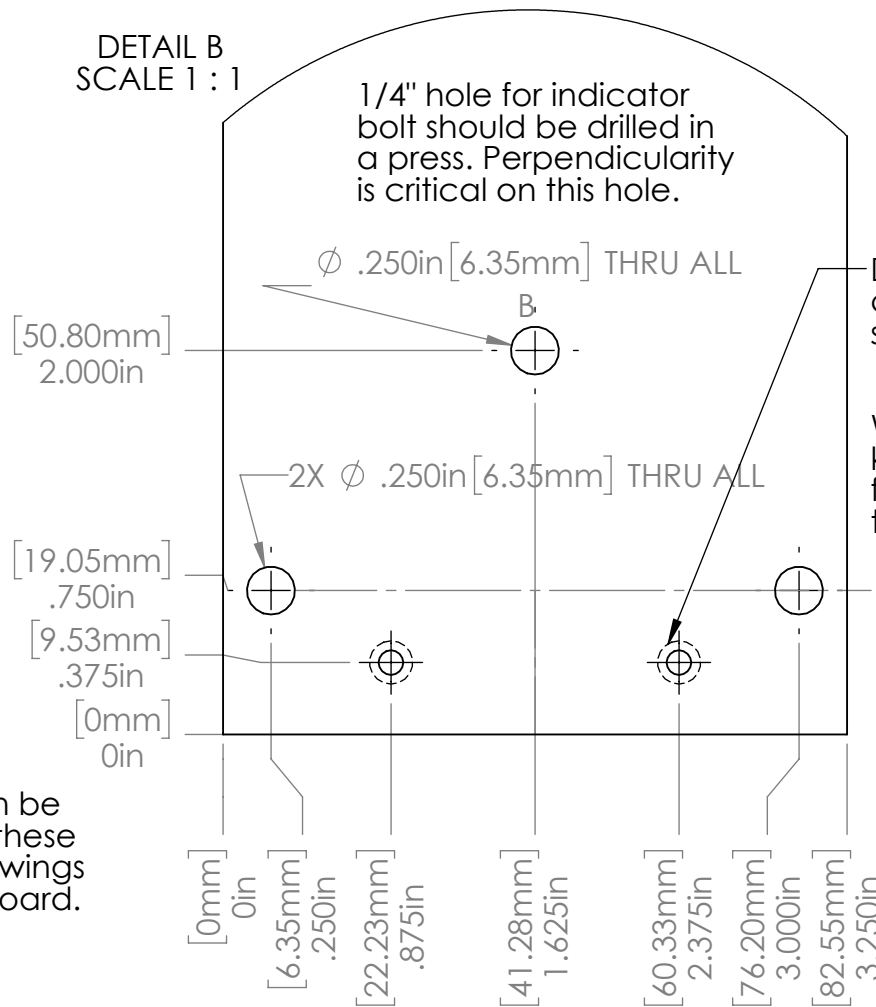
B

B

DETAIL B  
SCALE 1 : 1



A table saw can be used to create these 1/8" deep narrowings of the tongue board.



1/4" hole for indicator bolt should be drilled in a press. Perpendicularity is critical on this hole.

Drill to tight fit and countersink bottom side for flat head screw.

Wood glue can help keep the screws from twisting when tightening the knobs.

A

A

OPEN SOURCE HARDWARE  
LICENSE LGPL

		UNLESS OTHERWISE SPECIFIED:		NAME	DATE
		DIMENSIONS ARE IN INCHES		DRAWN	
		TOLERANCES:		CHECKED	
		FRACTIONAL ±		ENG APPR.	
		ANGULAR: MACH ± BEND ±		MFG APPR.	
		TWO PLACE DECIMAL ±		Q.A.	
		THREE PLACE DECIMAL ±		COMMENTS:	
		INTERPRET GEOMETRIC TOLERANCING PER:			
		MATERIAL			
		Material <not specified>			
		FINISH			
NEXT ASSY	USED ON				
APPLICATION		DO NOT SCALE DRAWING			

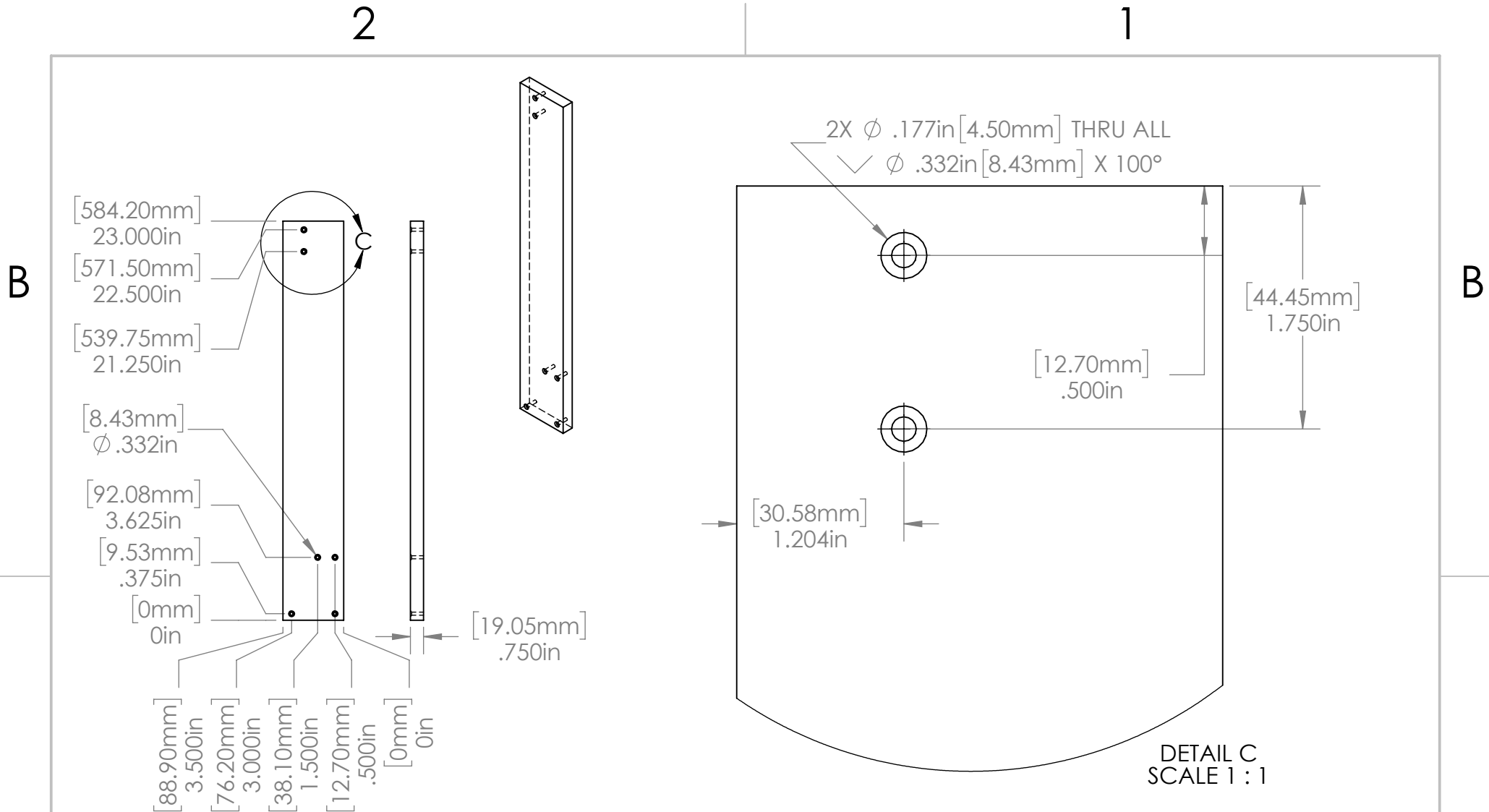
TITLE:  
Top Tongue Board  
1 Required  
3/4" x 3-1/2" Pine

SIZE	DWG. NO.	REV
SCALE: 1:8	WEIGHT: 13.971	SHEET 5 OF 10

reprap\_▲belt\_stretch\_test\_sto

2

1

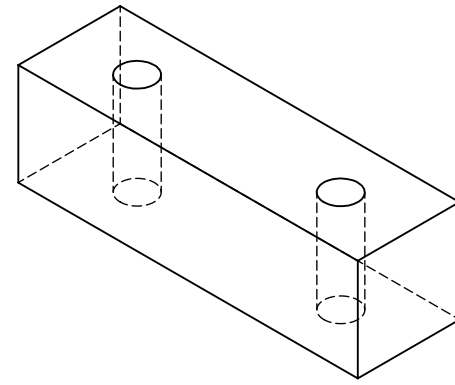
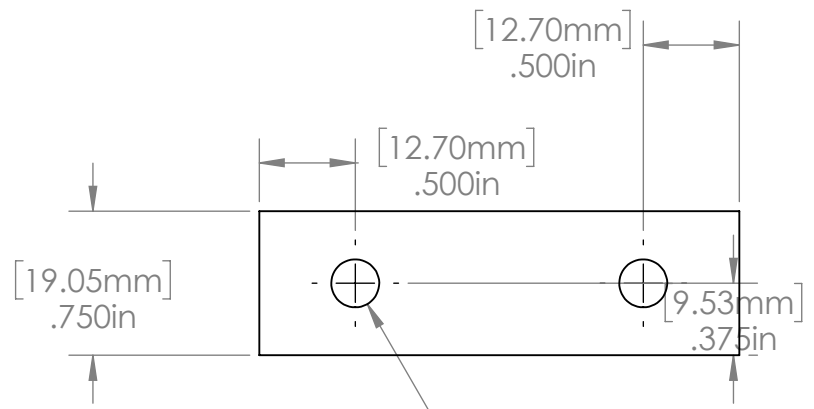


OPEN SOURCE HARDWARE LICENSE LGPL		UNLESS OTHERWISE SPECIFIED:		NAME	DATE	TITLE: Upright 2 Required 3/4 x 3-1/2 Pine	
		DIMENSIONS ARE IN INCHES TOLERANCES: FRACTIONAL $\pm$ ANGULAR: MACH $\pm$ BEND $\pm$ TWO PLACE DECIMAL $\pm$ THREE PLACE DECIMAL $\pm$		DRAWN			
NEXT ASSY		USED ON		ENG APPR.		SIZE	DWG. NO.
APPLICATION		DO NOT SCALE DRAWING		MFG APPR.		REV	
				Q.A.		reprap_Alt_stretch_test_sto	
				COMMENTS:		SCALE: 1:8	WEIGHT: 17.052
						SHEET 6 OF 10	

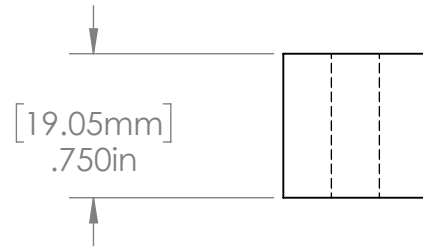
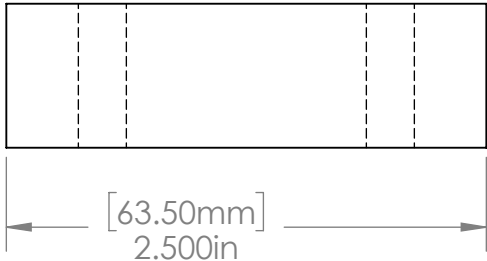
2 1

B

B



2X  $\phi$  .250in [6.35mm] THRU ALL



A

A

**PROPRIETARY AND CONFIDENTIAL**  
 THE INFORMATION CONTAINED IN THIS DRAWING IS THE SOLE PROPERTY OF <INSERT COMPANY NAME HERE>. ANY REPRODUCTION IN PART OR AS A WHOLE WITHOUT THE WRITTEN PERMISSION OF <INSERT COMPANY NAME HERE> IS PROHIBITED.

		UNLESS OTHERWISE SPECIFIED:		NAME	DATE
		DIMENSIONS ARE IN INCHES	DRAWN		
		TOLERANCES:	CHECKED		
		FRACTIONAL $\pm$	ENG APPR.		
		ANGULAR: MACH $\pm$ BEND $\pm$	MFG APPR.		
		TWO PLACE DECIMAL $\pm$	Q.A.		
		THREE PLACE DECIMAL $\pm$	COMMENTS:		
		INTERPRET GEOMETRIC TOLERANCING PER:			
		MATERIAL			
		Material <not specified>			
		FINISH			
NEXT ASSY	USED ON				
APPLICATION		DO NOT SCALE DRAWING			

TITLE:		
SIZE	DWG. NO.	REV
reprap_Alt_stretch_test_sto		
SCALE: 2:1	WEIGHT: 0.377	SHEET 7 OF 10

2

1

2

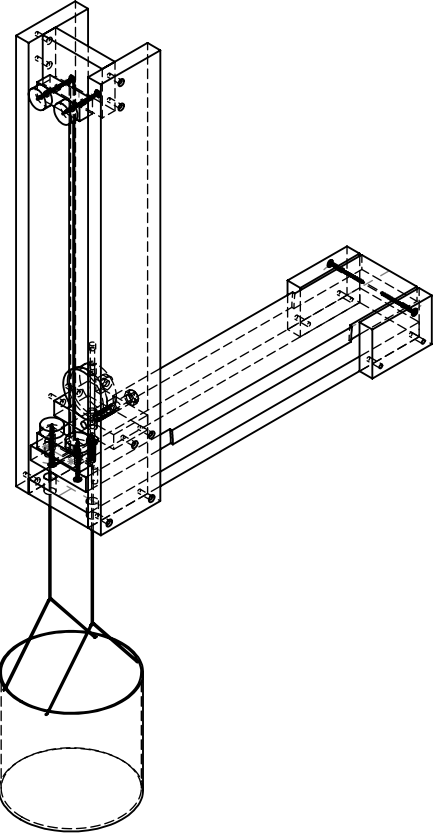
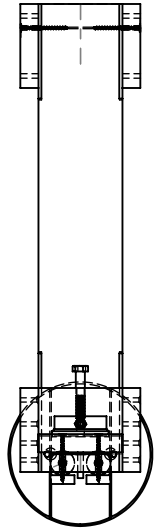
1

B

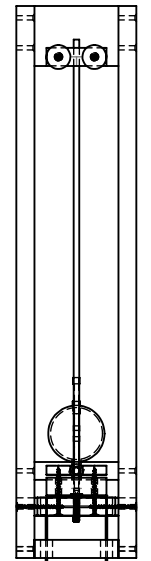
B

A

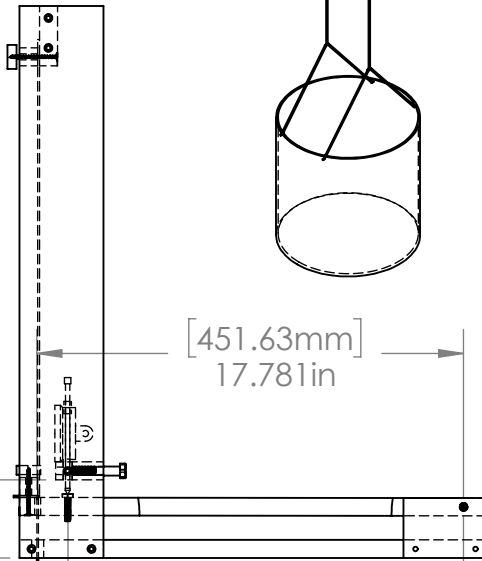
A



[21.05mm]  
.829in

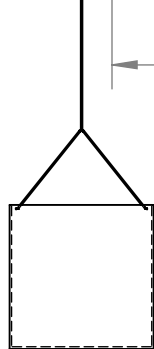
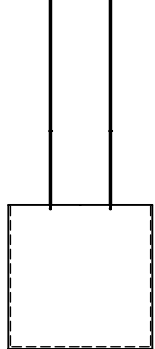


[82.55mm]  
3.250in



[451.63mm]  
17.781in

[418.60mm]  
16.480in



**PROPRIETARY AND CONFIDENTIAL**  
THE INFORMATION CONTAINED IN THIS DRAWING IS THE SOLE PROPERTY OF <COMPANY NAME>. ANY REPRODUCTION IN PART OR AS A WHOLE WITHOUT THE WRITTEN PERMISSION OF <COMPANY NAME> IS PROHIBITED.

		DIMENSIONS ARE IN INCHES		NAME	DATE
		TOLERANCES:		DRAWN	
		FRACTIONAL ±		CHECKED	
		ANGULAR: MACH ± BEND ±		ENG APPR.	
		TWO PLACE DECIMAL ±		MFG APPR.	
		THREE PLACE DECIMAL ±		Q.A.	
		MATERIAL		COMMENTS:	
		Material <not specified>			
NEXT ASSY	USED ON	FINISH			
APPLICATION		DO NOT SCALE DRAWING			

SIZE DWG. NO. REV.  
rearap\_belt\_stretch\_test\_stand  
SCALE:1:12 WEIGHT: 71.991 SHEET 8 OF 10

2

1

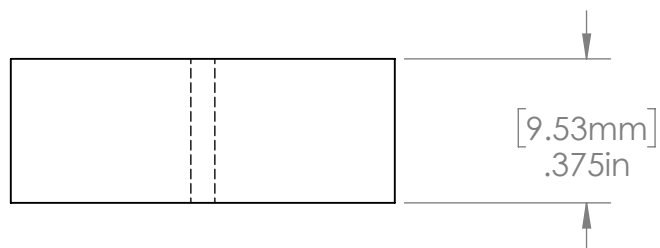
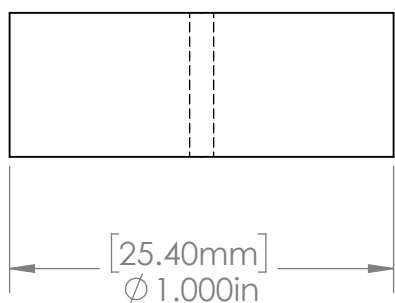
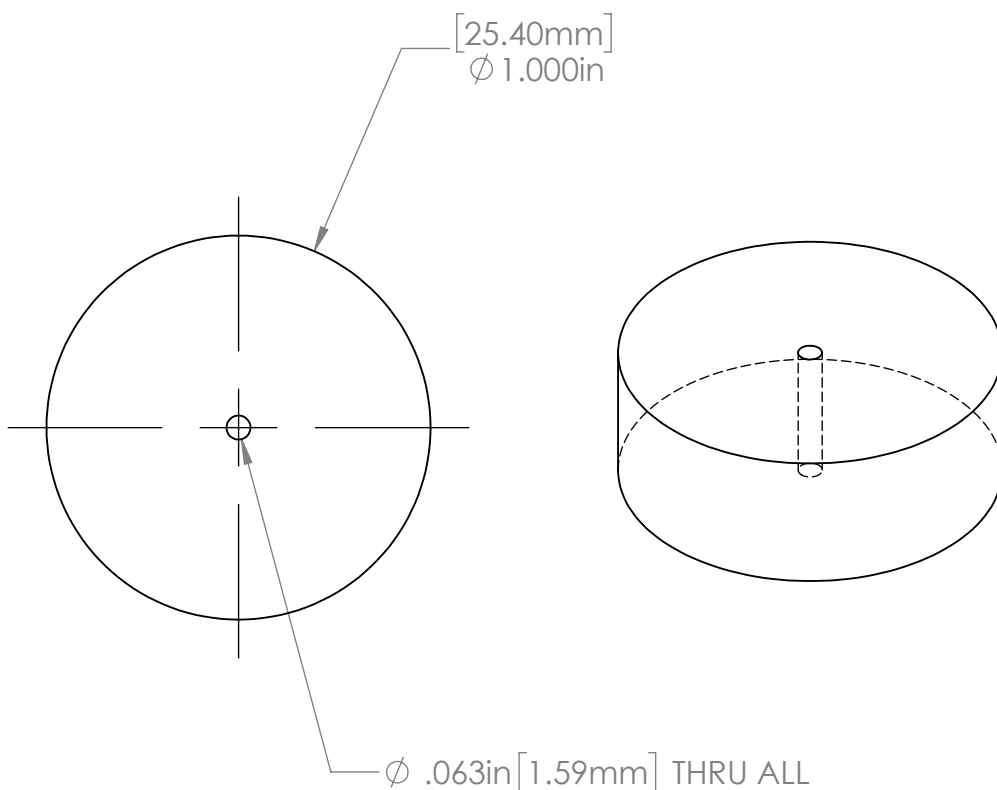


2

1

B

B



A

A

		DIMENSIONS ARE IN INCHES TOLERANCES: FRACTIONAL ± ANGULAR: MACH ± BEND ± TWO PLACE DECIMAL ± THREE PLACE DECIMAL ±		NAME	DATE
		MATERIAL Material <not specified>		DRAWN	
		FINISH		CHECKED	
NEXT ASSY	USED ON			ENG APPR.	
				MFG APPR.	
				Q.A.	
				COMMENTS:	
APPLICATION		DO NOT SCALE DRAWING			

OPEN SOURCE HARDWARE  
LICENSE LGPL

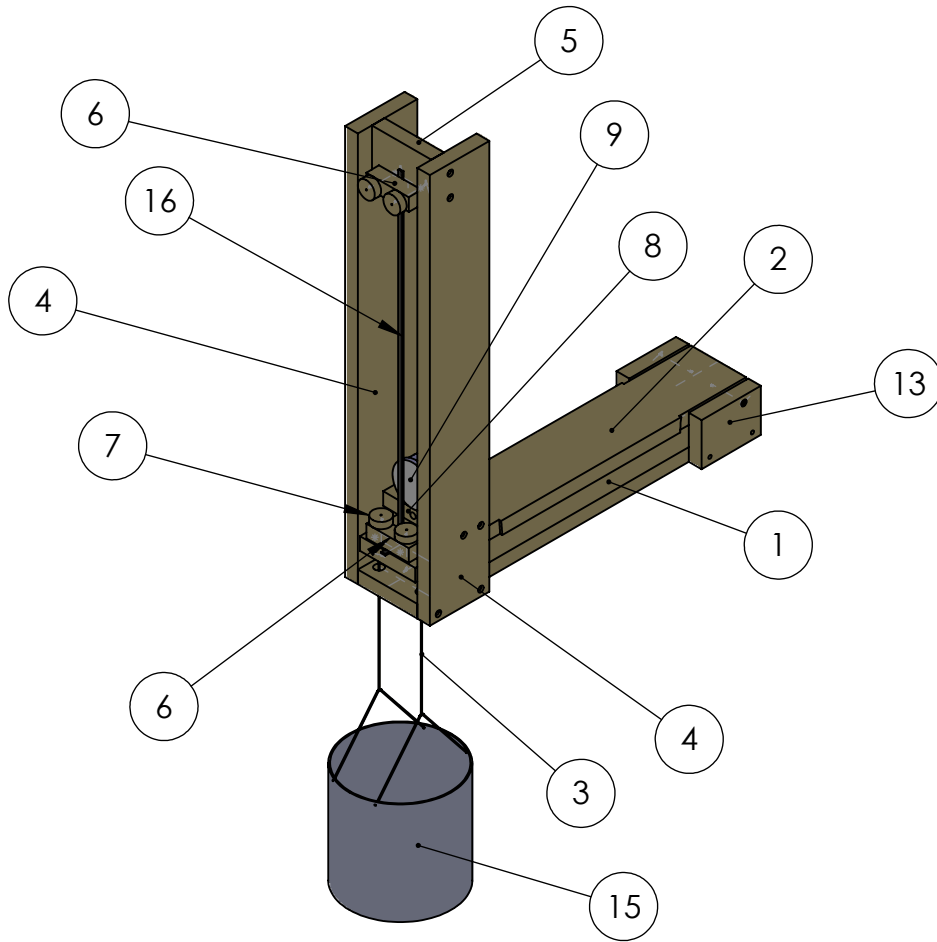
Knob  
4 Required  
Plywood

rearap\_belt\_stretch\_test\_stanc

SIZE	DWG. NO.	REV.
SCALE:2:1	WEIGHT: 0.083	SHEET 9 OF 10

2

1



ITEM NO.	PART NUMBER	QTY.
1	upper pivoting tongue	1
2	lower_tongue (fixed)	1
3	string	1
4	upright	2
5	frame_top_block	1
6	belt_clamp_block	2
7	knob	4
8	indicator_mount	1
9	Dial_indicator_body- Harbor_Freight_Item623	1
10	Dial_indicator_body- Harbor_Freight_Item623	1
11	91247A632	1
12	92865A542	1
13	hinge_plate	2
14	99136A400	6
15	weight_hopper	1
16	belt	1