

Tripodmaker Black Edition

Screen Replacement

Needed for this repair:

- A small flat screwdriver
- Allen wrench size 2.5 and 3
- A big "+" screwdriver

Keep in mind:

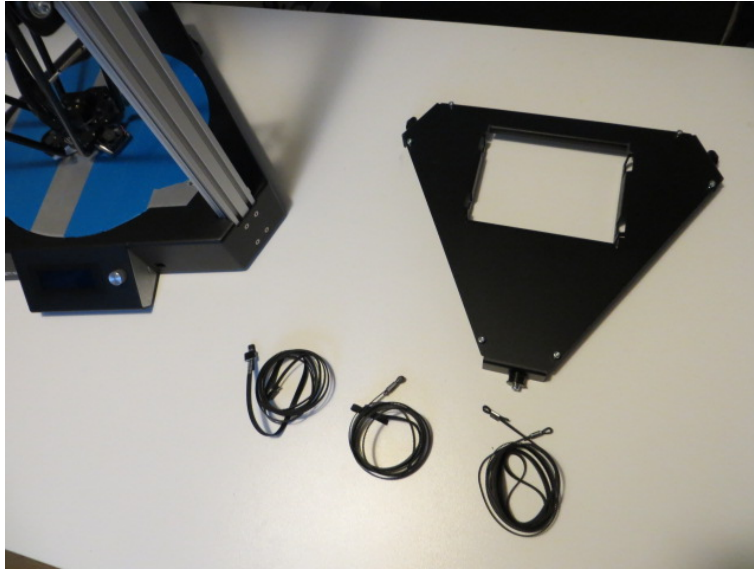
- Wiring on these pictures might differ from your particular Black Edition as this document was created based on one of the prototypes
- Unplug your machine while doing this
- In case something is unclear or not well documented, get in touch, we'll help you out as soon as possible.
- Failing in following these instructions will void your warranty.

Lets get started:

1. Remove the belts from all three carts. Do this by holding the cart with your one hand and lifting the belt from the lowest screw.



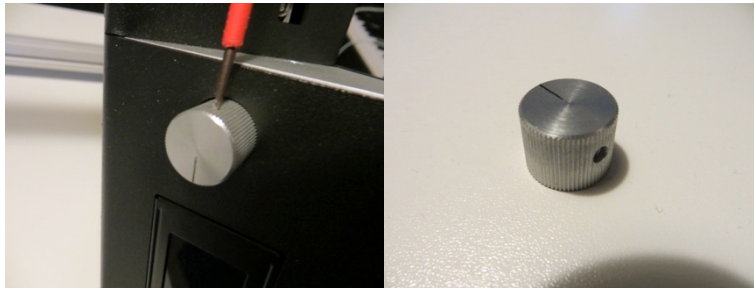
2. Remove the belts from your Tripodmaker Black Edition and remove the top cover of the printer



3. Tip the printer on the side where you plug in the power source. Make sure you guide the print head when repositioning the printer so it doesn't get damaged.



4. Remove the button of the LCD screen with a flat screwdriver.



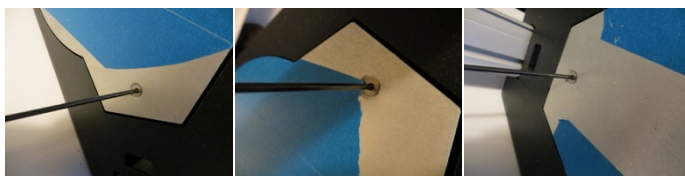
5. Remove the SD-card from the printer



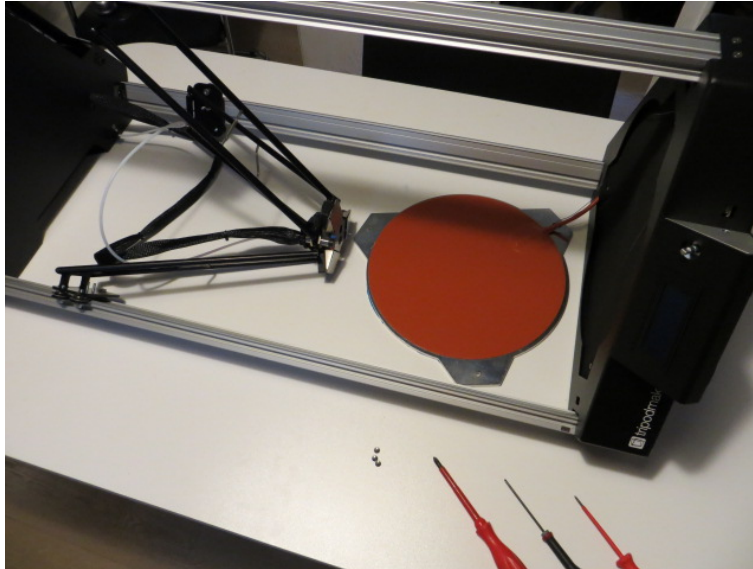
6. Remove the side panels of the LCD screen with the big "+"-screwdriver



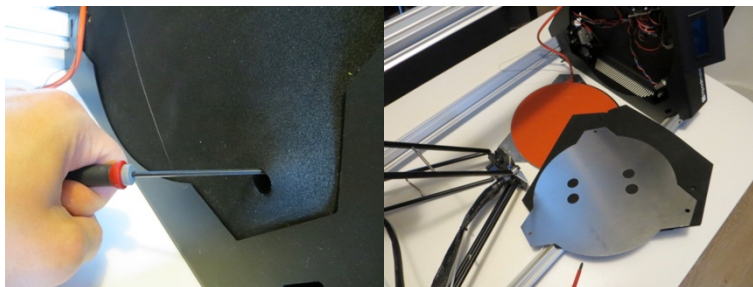
7. Remove the heated build platform by removing the countersunk 3 screws you find on the buildplate. It is advised to end with the top screw to prevent the plate from tipping during unscrewing.



- Put the heated bed on the table as shown on the picture below. The orange and 2 black cables are squeezed between the insulation and the frame. Pull the cables **gently** so the cable is long enough to make the bed rest on the table properly.

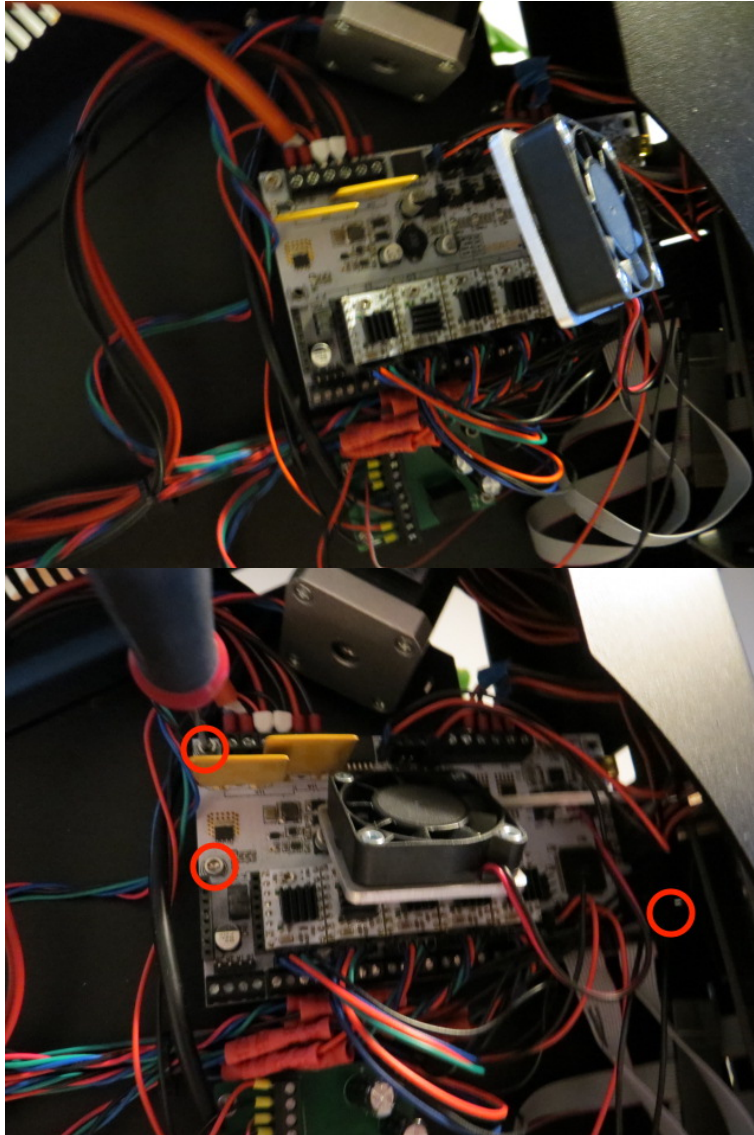


- Remove the insulation with a screwdriver and remove the insulation cover afterwards.



- Depending on your specific cable routing, you should be able to remove the LCD screen without unplugging cables. In case this is not possible, unplug cables that might be in your way. An electric diagram is provided at the end of this document.

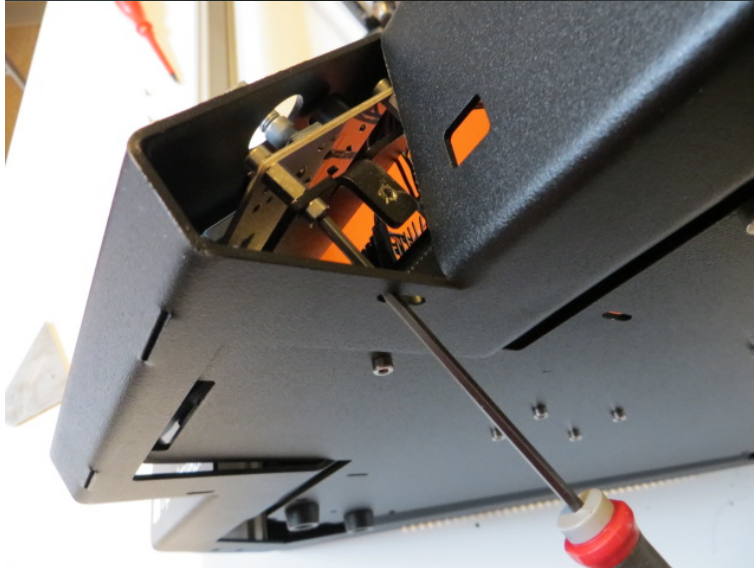
11. Bend the fan holder upwards so you can reach the electronics. Unscrew 3 screws that hold the motherboard.



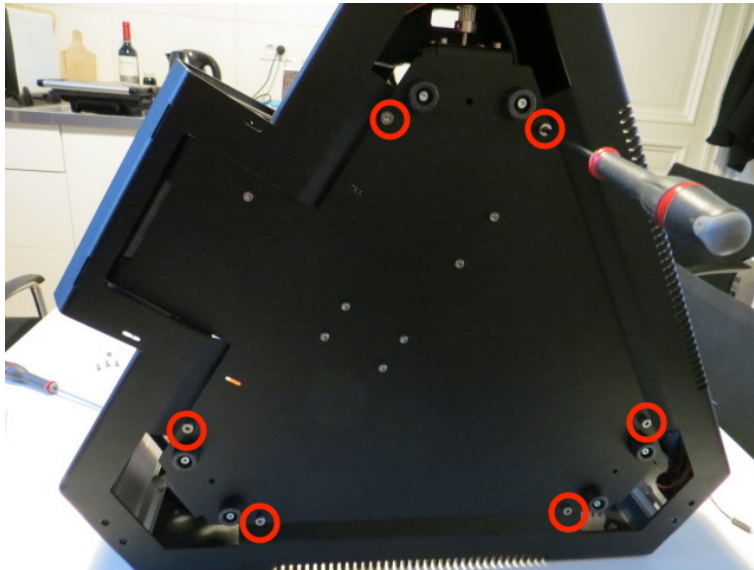
12. Remove the side panels of the LCD screen. To easily remove them, twist out the panels as indicated by the arrows



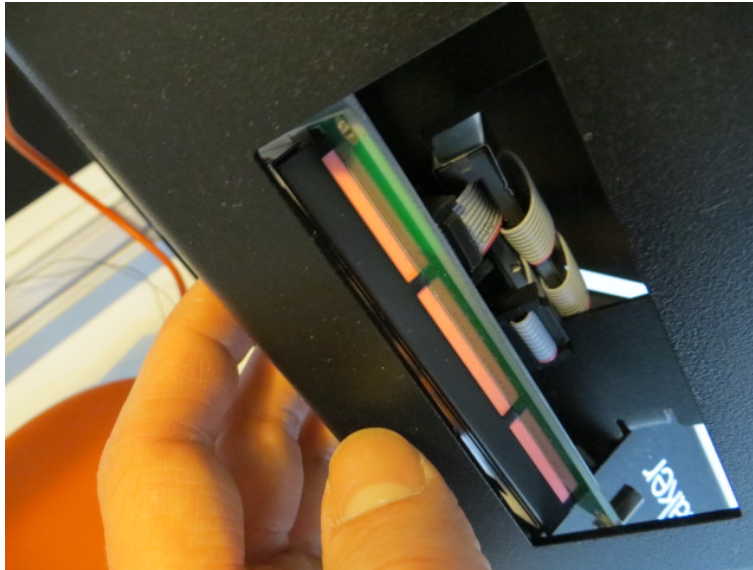
13. Unscrew the display from the frame by using the access holes on the bottom of your Tripodmaker Black Edition. You will have to squeeze your screwdriver next to the dismantled motherboard.



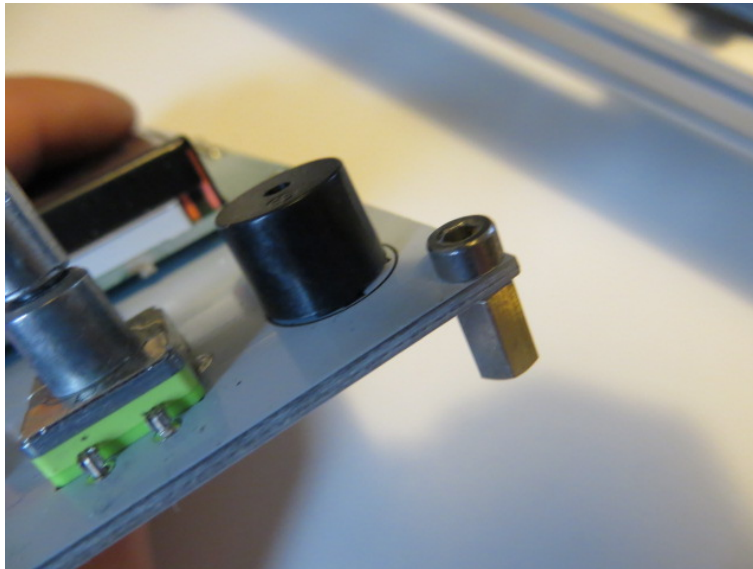
14. Unscrew 6 screws to remove the bottom cover of Tripodmaker Black Edition



15. Partially remove the bottom cover just to make place for the LCD screen to leave its mounting position. Disconnect the cables of your screen through the front of the printer.

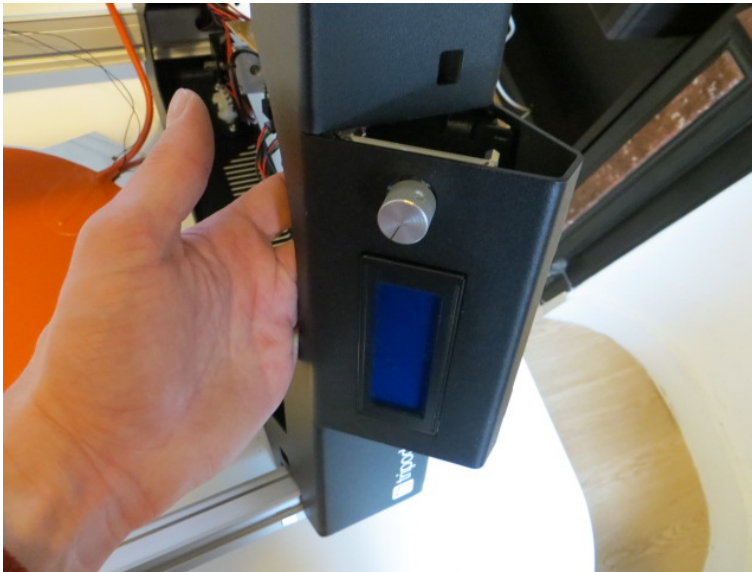


16. Remove the spacers from the LCD screen and mount them on your new LCD screen.

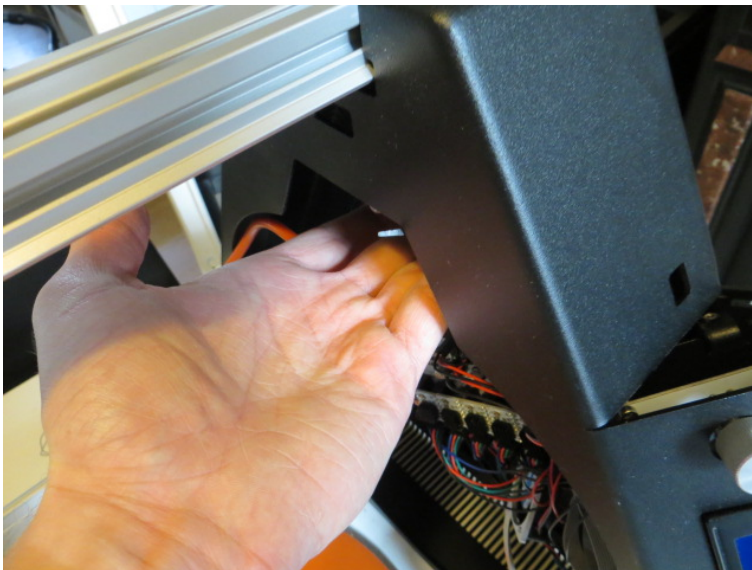


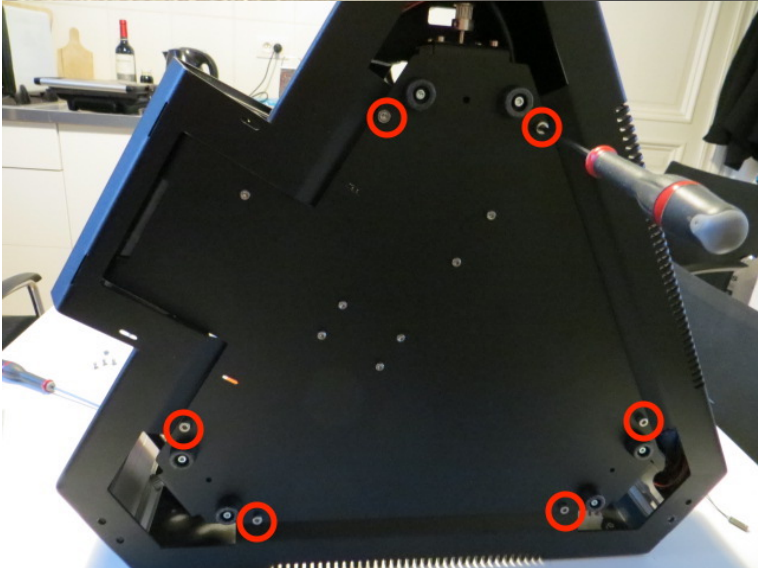
17. Put the screen back in place after reconnecting the cables.

18. Now remount the click button to hold the screen in position.

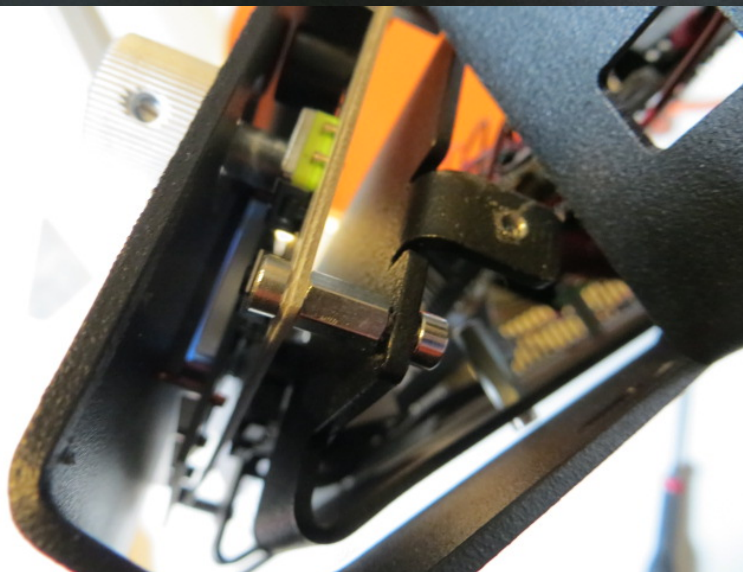


19. Position the bottom cover of your Tripodmaker Black Edition by holding the motor from the inside out. Insert the 6 screws to hold the bottom cover in place, but **don't tighten them yet.**

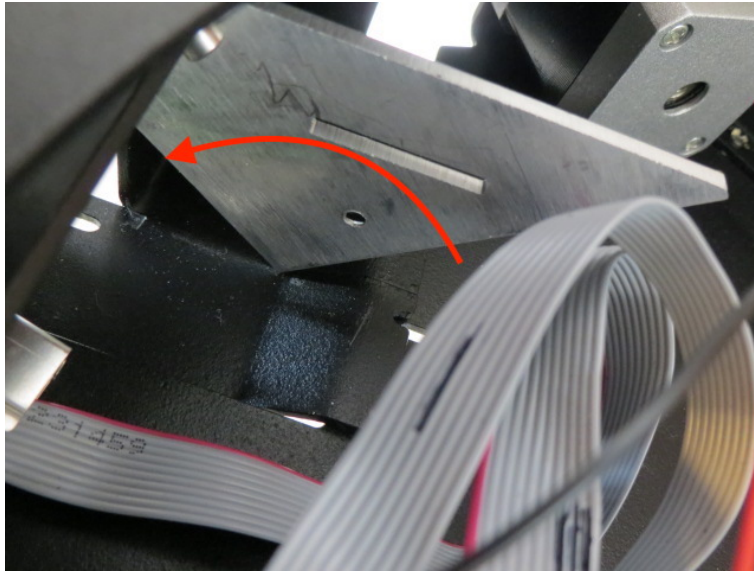




20. Insert the 4 screws to fit the LCD screen to the frame. **Don't tighten them yet.**



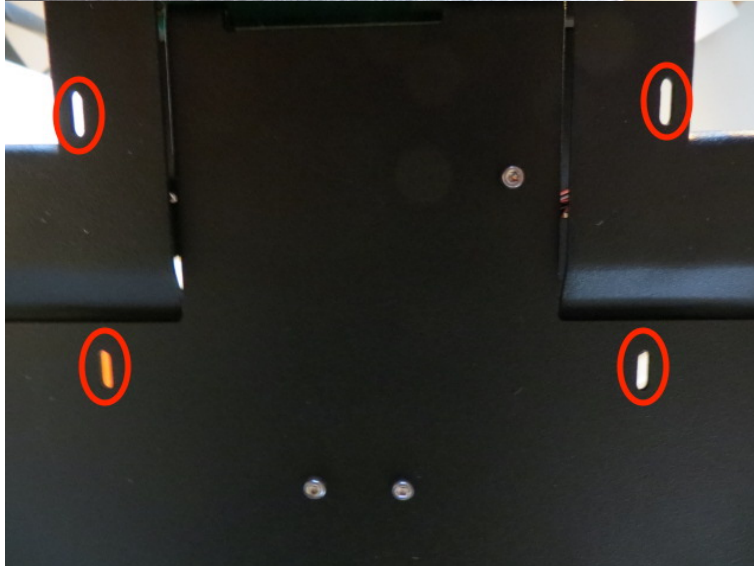
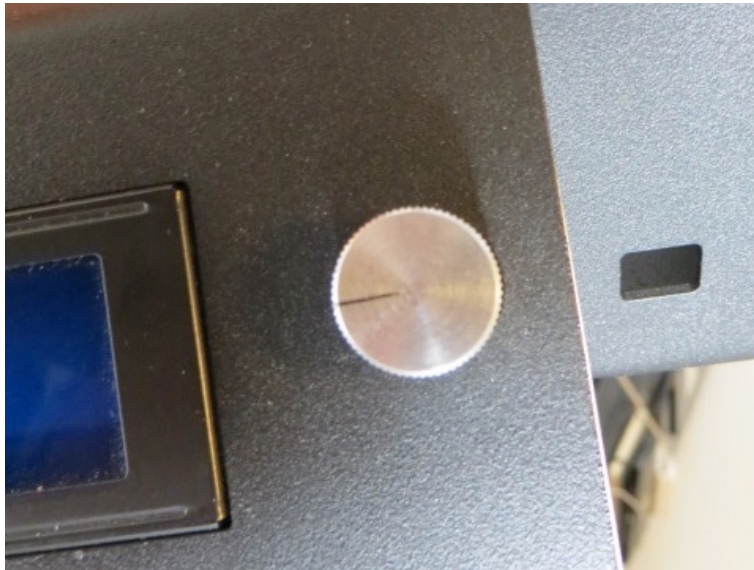
21. Reposition the LCD screen side panels. "Turn" them in, in order to make them fit. Just sliding them in wont work. **Make sure you don't damage the cables.**



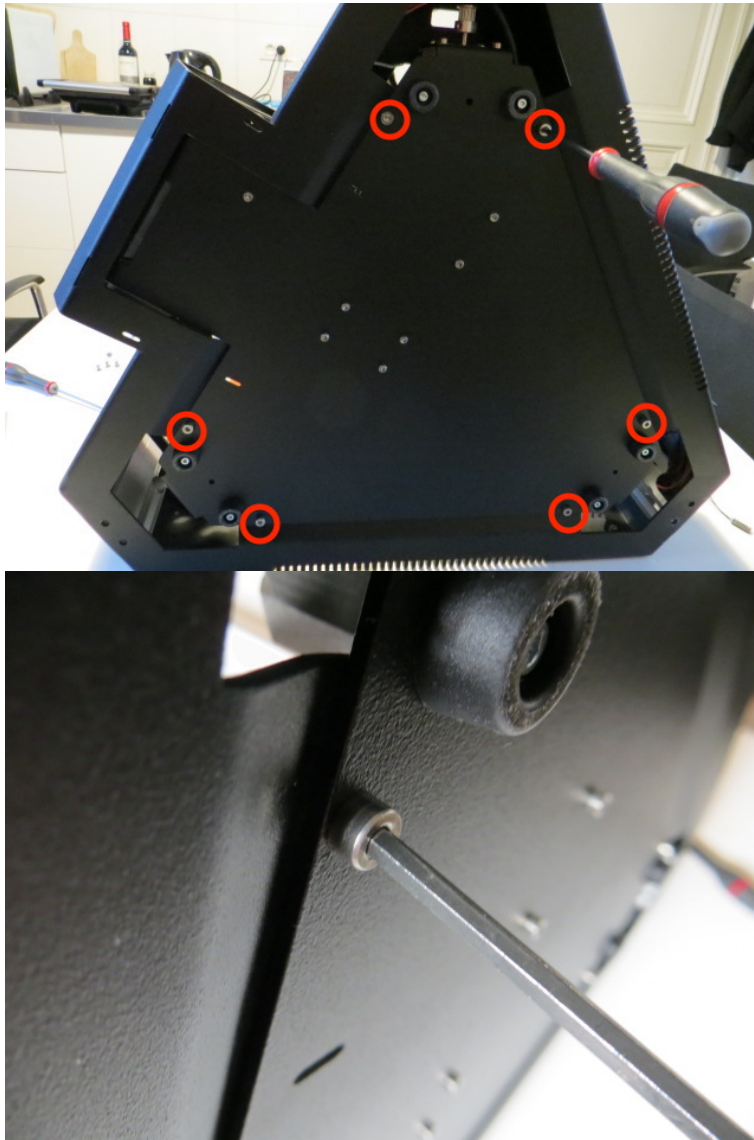
22. Reattach the LCD screen side panels with the big "+"-screwdriver.



23. Align the LCD screen button with the frame and tighten the screws that hold the LCD screen.

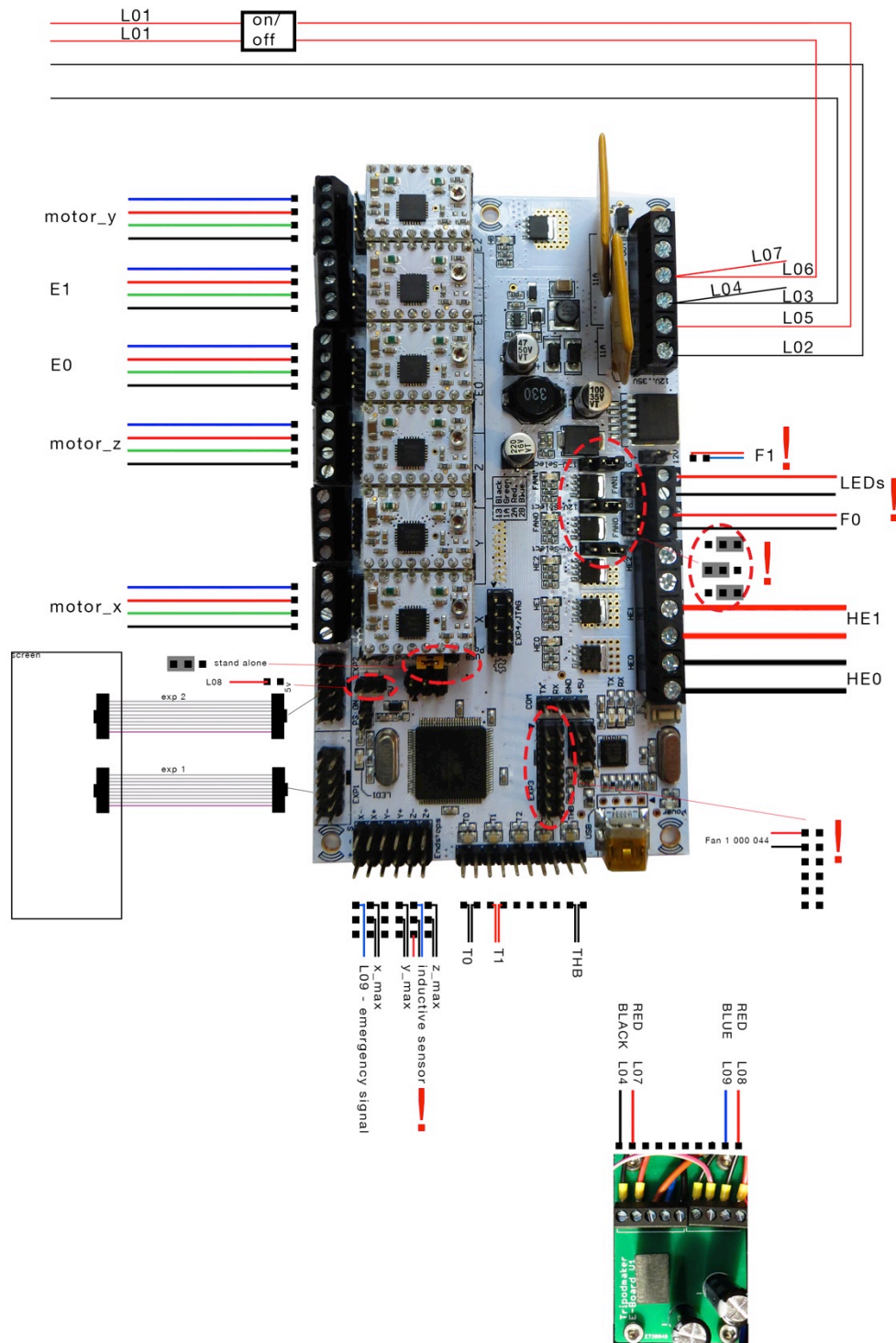


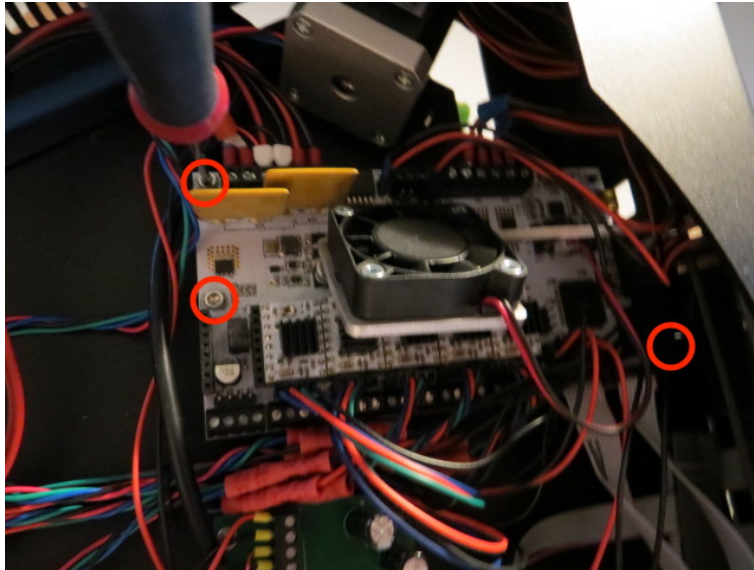
24. Tighten the bolts that hold the bottom cover.



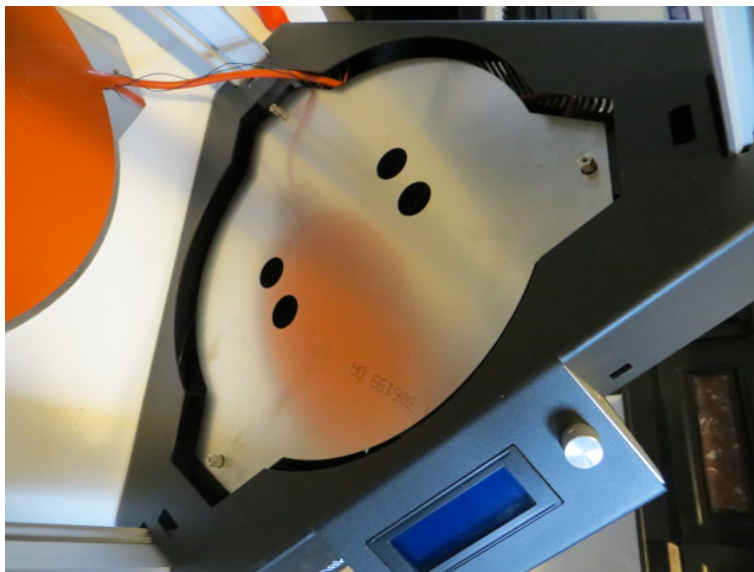
25. Put all wires in place and remount the motherboard of the printer with the 3 screws. Reposition the fan by bending the Fan Holder. Make sure no short-circuiting with the motherboard occurs.

Once everything is attached, it is advised to turn on the printer before you close up everything. Do a homing procedure and see if the endstop switches are connected correctly and check if temperatures are read out correctly.

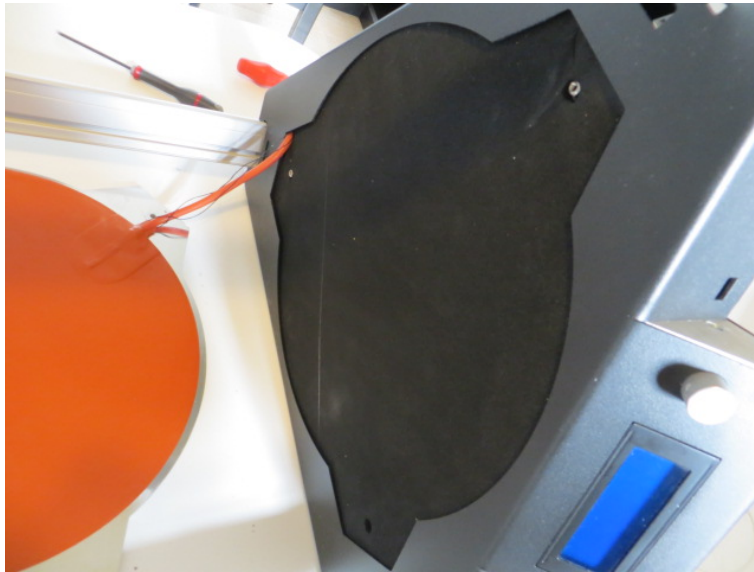




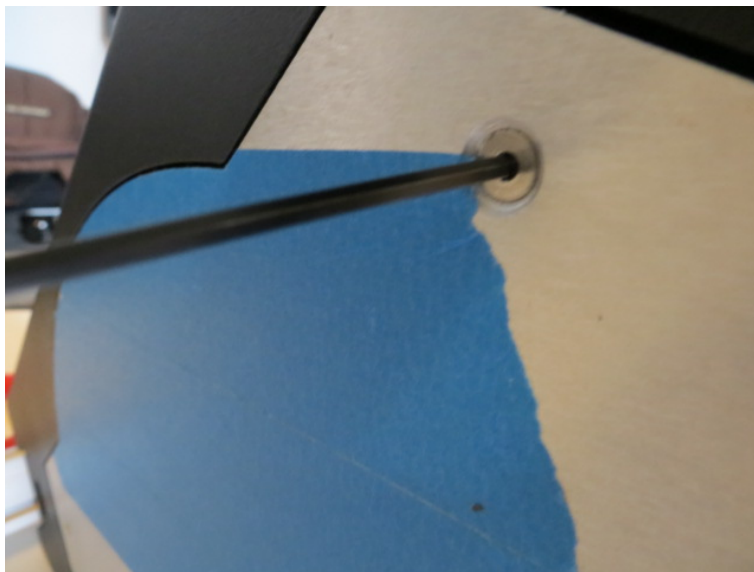
26. Reposition the insulation cover plate. Make sure you guide the orange cable as shown on the picture.



27. Install the insulation.



28. Put the heated bed back in place and mount it with 3 countersunk screws.



29. Put the printer back on its feet so it is in operational position.

30. Put the top cover in place. Pay attention on the rubber spacers.



31. Connect the belt to the top screw of the cart and root the belt behind the returning pulley and motor pulley by using loops.



32. Finally, attach the belt to the bottom screw of the cart.



33. All done! Congrats