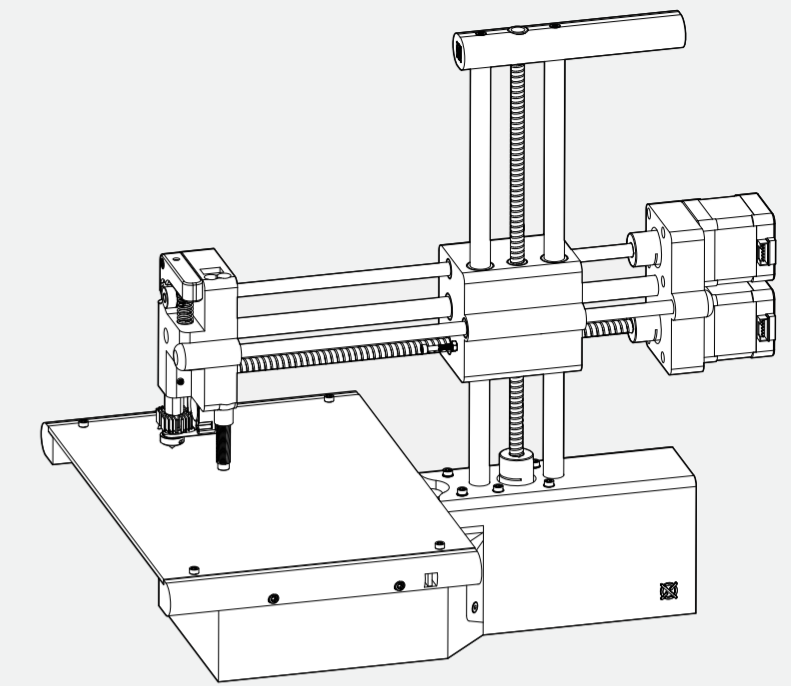
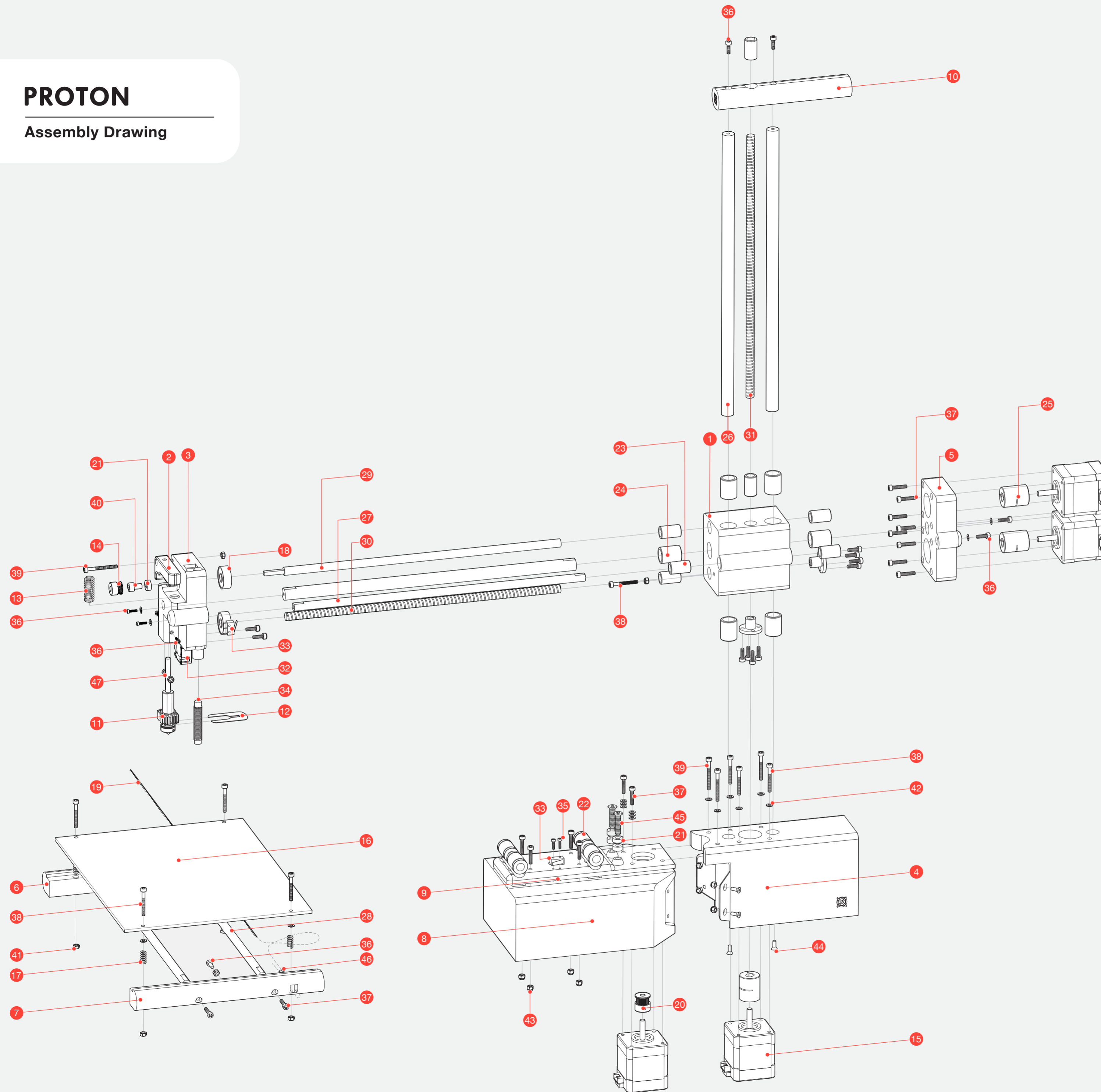




# PROTON

## Assembly Drawing



No.	Part Name	Qty
1	Center Holder	1
2	Extruder Arm	1
3	Extruder Holder	1
4	Base1	1
5	Motor Holder	1
6	Print bed Holder1	1
7	Print bed Holder2	1
8	Base 2	1
9	Base 3	1
10	Top Handle	1
11	ATOM 2.5 MK3 with 0.4mm Nozzle (for 2.5)	1
12	Upper Hotend Windshield	1
13	Extruder Spring v2 (8.5 x 1.1 x 11R x 32L)	1
14	Extruder Drive Gear v2 (SUS) with M3-3 Headless Hex	1
15	Stepper Motor 42HS48	4
16	Steel Print Bed (250 x 190mm)	1
17	M3 Spring	4
18	Bearings 608ZZ (8 x 22 x 7mm)	2
19	2gt Timing Belt (380mm)	1
20	2gt Timing Pulley (20 Tooth) with M4-4 Headless Hex	1
21	Bearings MR105ZZ	5
22	Bearings LM8UU	4
23	Copper Sleeve (8 x 12 x 20mm)	7
24	Copper Sleeve (12 x 16 x 20mm)	6
25	Coupler D20L25	3
26	Shaft $\phi$ 12, 295mm	3
27	Shaft $\phi$ 8, 295mm	1
28	Shaft $\phi$ 8, 250mm	2
29	Shaft $\phi$ 8, 300mm	1
30	Screw Shaft $\phi$ 8, 278mm (lead of the twist 12)	1
31	Screw Shaft $\phi$ 8, 278mm (lead of the twist 4)	1
32	2510 Back Fan (685mm Green Orange 28AWG)	1
33	XYZ Endstop (1200mm Black 28AWG)	2
34	Capacitive sensor M8*45mm	1
35	M2-10 Hex Screw	2
36	M3-10 Hex Screw	16
37	M3-15 Hex Screw	19
38	M3-25 Hex Screw	8
39	M3-30 Hex Screw	4
40	M5-8 Hex Screw	1
41	M3 Nut	9
42	M3 Washer	18
43	M3 Nyloc Nut	8
44	M3-6 Counter Sink Hex	4
45	M5-20 Thin Head Screw	2
46	Cable Tie Black	10
47	PTFE Tube (2 x 4 x 870mm)	1
48	Cable Tube (1000 mm)	1