

1 2 3 4 5 6

A

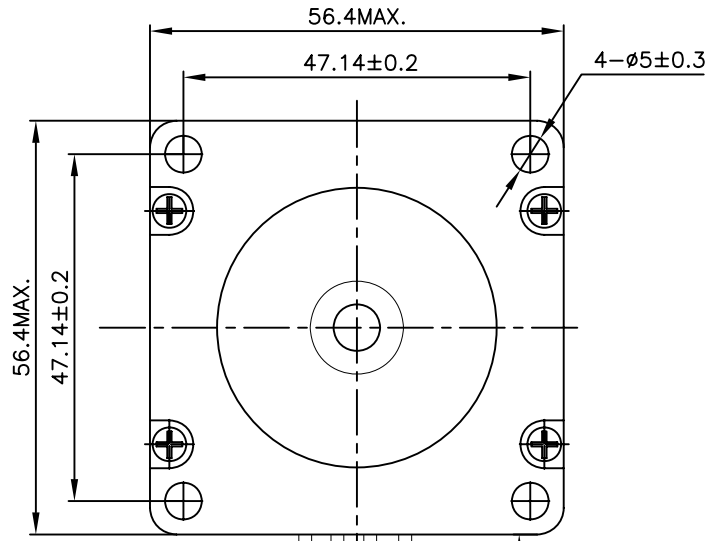
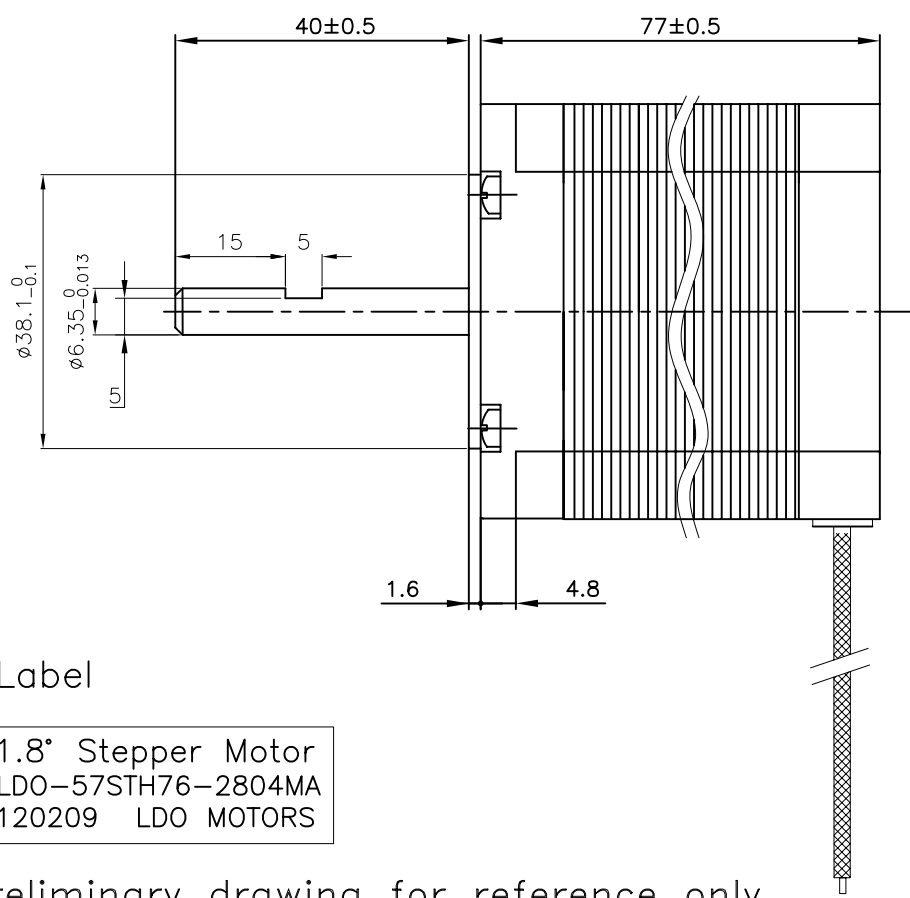
B

C

A

B

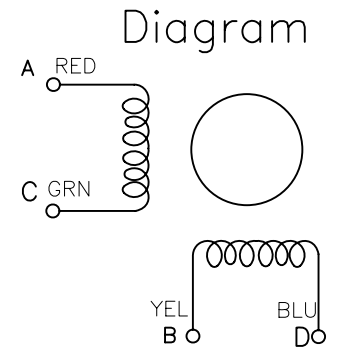
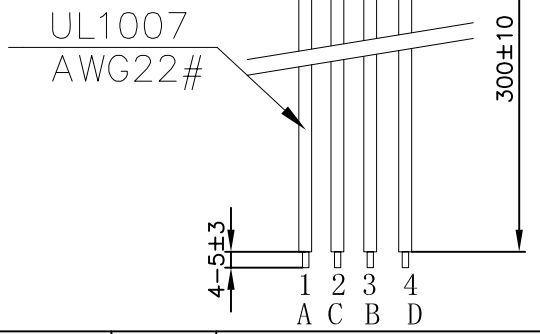
C



Label

1.8° Stepper Motor
LDO-57STH76-2804MA
120209 LDO MOTORS

Preliminary drawing for reference only,
and actual data maybe slightly different.



Items	Specs	Items	Specs
Phase Number	2 phases	Step Angle	0.9° ±5%
Rated Voltage	3.2 VDC	Rated Current	DC 2.8 A / Phase
Resistance(20°C)	1.1±15% Ω / phase	Inductance	3.96±20% mH / Phase
Holding Torque	≥18.9 Kg-cm	Detent Torque	0.6 Kg-cm REF.
Rotate Direction	ACBDA CW	MAX Starting PPS	≥1500 PPS
MAX slewing PPS	≥2500 PPS	Insulation Resistance	≥100 MΩ (DC 500V)
HI POT	AC600V/1mA/1S	Insulation Class	Class B
Rotor Inertia	480 g.cm ²	Weigth	1.2 Kg REF.

Pre	---	New Release	J. B.	J. B.	02. 09. 12
REV	ECN NO	Description	Made by	Approve	Date
			LDO MOTORS CO.,LTD		
		Scale	Hybrid Stepper Motor LDO-57STH76-2804MA		
Des.	Check	Appr.	Date	Factory Code	23HDxxxx
				page	

1 2 3 4 5 6

D

D